

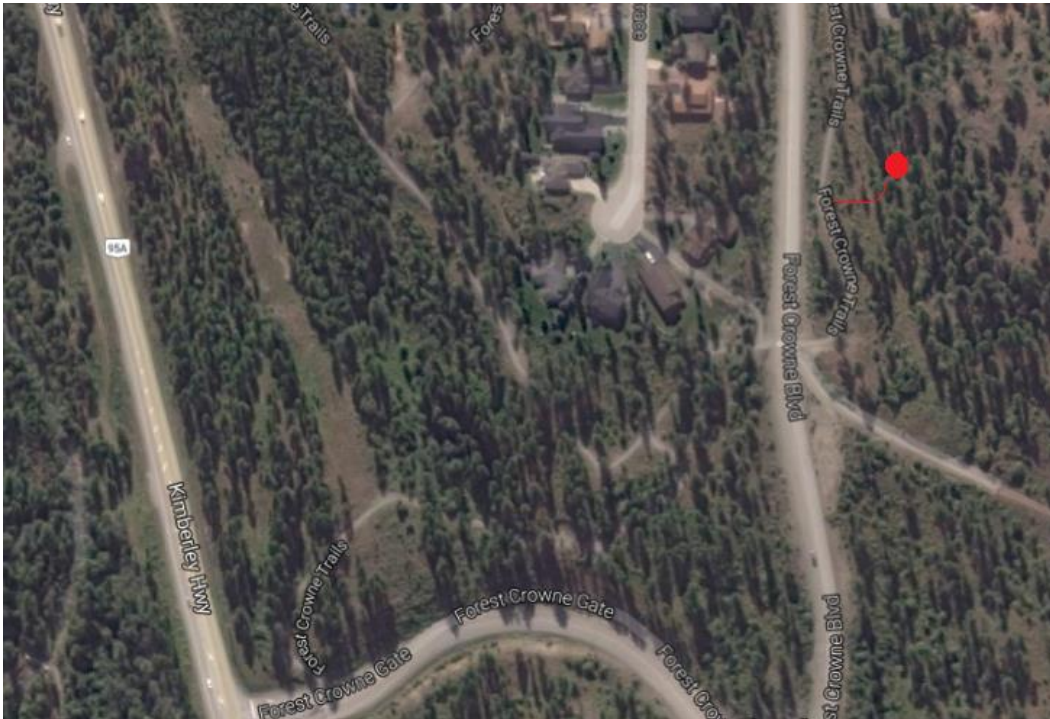
Forest Crown Boulder

Overview

This small boulder can be found at the top of the hill leading to Forest Crown residential development. A short 2 minute walk from the paved walking path will lead you to the venue. There are currently 5 established routes ranging from V0 to V2.

Location

From Kimberley follow highway 95A toward Marysville until you reach the Forest Crown Turn off. Turn onto the forest crown road and continue up the hill, parking can be found half way up the hill or along the road side near the top. Gain access to the paved walking path (labeled Forest Crown Trial on map) near the top of the hill. Follow this for 200m heading until the boulder is visible on your right. An established deer path leads to the bouldering location.



Routes

1. **V0** (A Not so Crampy Corner) straight up the corner then out left/over a small roof at the top
2. **V0** (Relatively an Arête) directly up the arête like feature.
3. **V2** (First and Foremost) small hold up the center of the boulder to a jug finish
4. **V1** (The Neighbours are Watching) Mix of small crimpers and right hand/foot side pull to the same finish as #3
5. **V2** (There and Back) a balanced traverse made harder if you stay low. Can be done in either direction

